



GreenLink™ qPCR Mix BLUE

- Contains an inert BLUE tracer dye to facilitate accurate pipetting & preparation of PCR Plates
- Just add primers and DNA
- Fast PCR compatible
- Superior sensitivity with low copy number templates

Item:	Description (500 x 20µl rxns)	Price
16-2200-L500	GreenLink™ qPCR Mix, BLUE LoRox	\$289
16-2200-H500	GreenLink™ qPCR Mix, BLUE HiRox	\$289

INERT Blue Tracking Dye



NEW

NEW! BioLink Taq MasterMix RED



- Industry-leading sensitivity and consistent performance
- Conveniently supplied as a 2X Master Mix (just add primers and DNA)
- Superior amplification with complex mammalian DNA containing high GC-content

SAVE

SPECIAL OFFER
200 FREE Reactions*

Item:	Description	Price
16-1001R-200	2x Taq Mix, red dye 200 x 50µl reactions	\$69 FREE*
16-1001R-1000	2x Taq Mix, red dye 1000 x 50µl reactions	\$295

*FREE with purchase of 16-1001R-1000

PCR and Thermal Cyclers

pg.2



Homogenizers, DNA/RNA Isolation

pg.4



Electrophoresis and Buffers

pg.6



General Equipment and Consumables

pg.8



Myco-X™ PCR Detection

Prevent - Detect - Eliminate
Protect your cells from the dangers of mycoplasma!

NEW!



pg. 5



PCR Products



GreenLink™ qPCR MasterMix

- Just add primers and DNA
- Fast PCR compatible
- Superior sensitivity with low copy number templates



FREE!
Mini Vortexer
With order of
GreenLink qPCR Mix

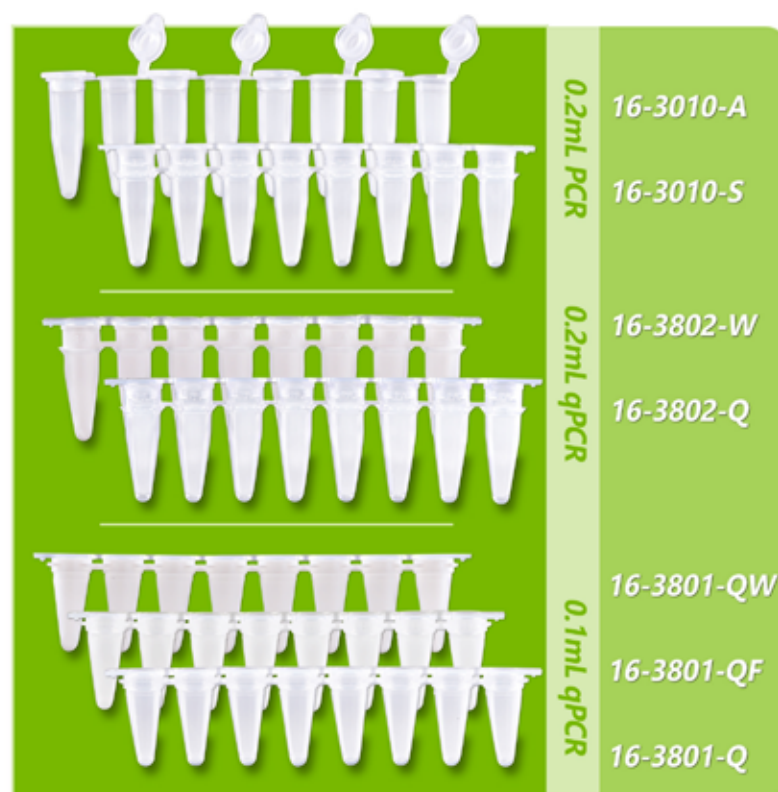
Item:	Description (500x20µl Reactions)	Price
16-200-N500	GreenLink, qPCR Mix, NoRox	\$299
16-200-L500	GreenLink, qPCR Mix, LoRox	\$299
16-200-H500	GreenLink, qPCR Mix, HiRox	\$299

FastLink™ PCR Genotyping Kit



- Isolate and amplify DNA in as little as 1 hour
- Supplied with LinkTaq™ HS Red Mastermix
- 15 minute, direct isolation protocol
- For tail snips, ear punches, hair follicles, buccal swabs, FFPE tissue, animal tissue & blood

Item:	Description	Price
16-1300MG-80	FastLink Kit, 80 Rxns	\$109
16-1300MG-400	FastLink Kit, 400 Rxns	\$469



AMPLify™ PCR and qPCR STRIPS

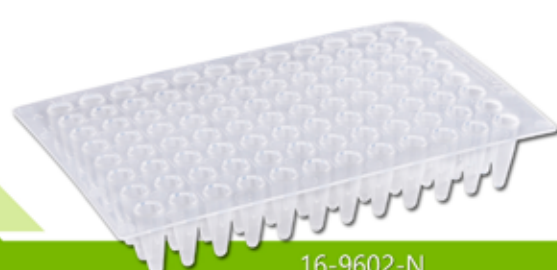
- Ultra thin polypropylene walls for efficient heat transfer
- 0.1mL low profile design, available in clear, white for frosted
- Packaged in sealed bags of ten for reduced risk of contamination

Item:	Description (120 strips, 12 bags of 10)	Price
16-3010-A	0.2mL PCR Strips, attached individual caps	\$69
16-3010-S	0.2mL PCR Strips, separate flat caps	\$69
16-3020	0.2mLPCR Strips. separate dome caps	\$69
16-3802-W	0.2mL qPCR Strips, white, separate clear optical caps	\$125
16-3802-Q	0.2mL qPCR Strips, separate clear optical caps	\$119
16-3801-QW	0.1mL qPCR Strips, white, separate clear optical caps	\$125
16-3801-QF	0.1mL qPCR Strips. frost, separate clear optical caps	\$119
16-3801-Q	0.1mL qPCR Strips, clear, separate clear optical caps	\$119



AMPLify™ PCR and qPCR PLATES

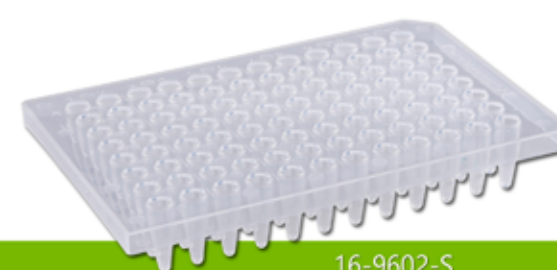
- Ultra thin polypropylene walls for efficient heat transfer
- Packaged in sealed bags of ten for reduced risk of contamination
- Available in standard (0.2mL) or low profile (0.1mL)
- Non-skirted, semi-skirted or semi-skirted with raised rim for compatibility with nearly all PCR, qPCR & sequencer instruments
- DNase, RNase, PCR Inhibitor, ATP and Endotoxin FREE



16-9602-N



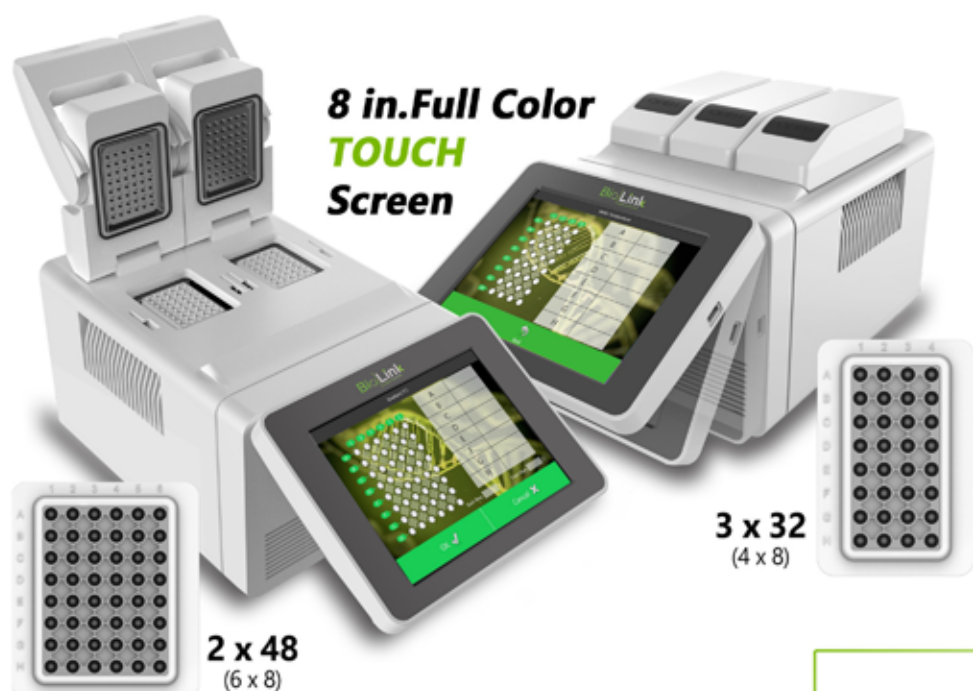
16-9602-SRE



16-9602-S

BioLink™ Thermal Cyclers

LinkCycler™ Gradient Thermal Cyclers



**8 in. Full Color
TOUCH
Screen**

**3 x 32
(4 x 8)**

**2 x 48
(6 x 8)**

- Run separate protocols simultaneously
- **Extra-Large full color touch screen** with adjustable viewing angle
- Gradient (8 different temperatures)
- User-friendly with convenient program recall

Specifications:

Temp. Range:	4°C to 99.9°C
Capacity:	2 blocks 48 x 0.2ml (T3-0248G) 3 blocks 32 x 0.2ml (T3-0332G)
Max. heat/cool rate:	6° / 7°C per sec.
Temp. Uniformity:	+/- 0.2°C
Temp. Accuracy:	+/- 0.1°C
Lid temp. range:	30°C to 112°C
Adj. Ramping:	Yes
Fast PCR:	Yes
Gradient:	Yes (across 8 wells)

Item:	Description	Price
T3-0248G	Gradient thermal cycler, 2 x 48	\$6295
T3-0332G	Gradient thermal cycler, 3 x 32	\$7695

LinkCycler™ Q Real-Time Thermal Cycler

- Unique top detection technology, reduces background noise
- Two color detection system with quick scanning capabilities
- Includes intuitive PC software, but traditional PCR can be set directly on interface

Specifications:

Capacity:	48 x 0.1µl
Volume:	10 to 50µl
Dimensions:	32 x 20 x 38cm
Temp. Range:	4°C to 100°C
Excitation:	LED
Calibrated Dyes:	
Channel 1:	FAM, SYBR
Channel 2:	VIC, HEX, JOE
Excitation Range:	470 to 500nm
Detection Range:	520-540nm (chan. 1) 540-700nm (chan.2)

Item:	Description	Price
T3-0148Q	qPCR Thermal Cycler, gradient, includes windows LinkCycler Q software	\$15,995



BioLink™ Plate Centrifuge

- Quickly spins down droplets in PCR plates
- Unique rotor prevents sample spillage
- Accepts all popular PCR plates

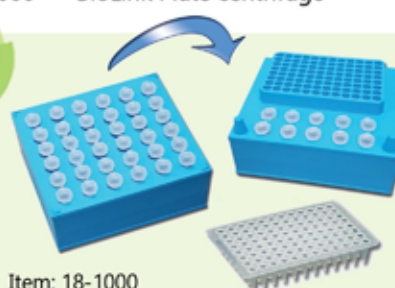


Before/After Centrifugation



During Centrifugation

Item:	Description	Price
32000	BioLink Plate centrifuge	\$699



Item: 18-1000

CoolCube™ PCR Workstation Cooler

- Maintains 4°C for up to 4 hours
- Unique, flip-over design
 - Side 1: 10 x 2.0ml and 96 x 0.2 (PCR plate)
 - Side 2: 35 x 2.0mL

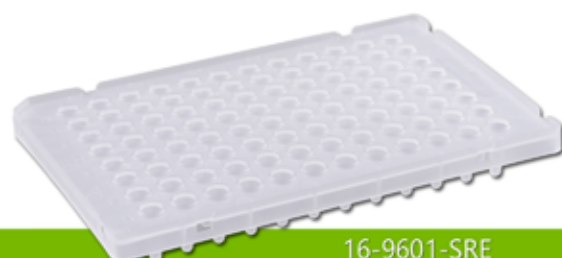
~~\$119~~ **FREE, with purchase of 32000**

AMPLify™ PCR/qPCR Sealing Film

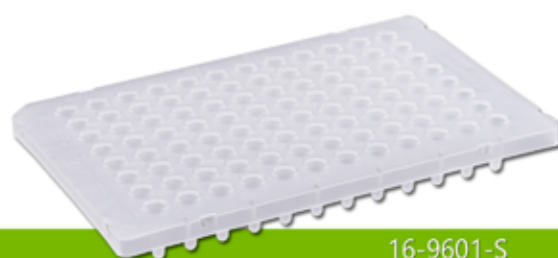


- Available in:
 - Standard adhesive backed for PCR
 - Adhesive backed for qPCR
 - Pressure release adhesive for qPCR
- DNase, RNase, DNA, PCR Inhibitor FREE
- Ultra clear membrane for **unmatched light transmission** (qPCR films only)

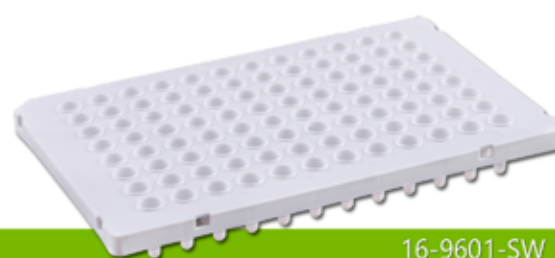
Item:	Description (pack of 50, 5 bags of 10)	Price
16-9602-N	96 x 0.2mL non-skirted	\$89
16-9602-SRE	96 x 0.1mL semi-skirted with raised edge	\$109
16-9602-SR	96 x 0.2mL semi-skirted	\$109
16-9601-SRE	96 x 0.1mL semi-skirted with raised edge	\$129
16-9601-S	96 x 0.1mL semi-skirted	\$129
16-9601-SW	96 x 0.1mL semi-skirted, white	\$139
Sealing Film, pk/100		
16-9600-F	Film, standard PCR,	\$65
16-9600-FQ	Film, qPCR adhesive backed	\$149
16-9600-FQPS	Film, qPCR, pressure release adhesive	\$99
16-9600-AL	Film, aluminum	\$65



16-9601-SRE



16-9601-S



16-9601-SW

DNA/RNA Isolation

LinkLyse™ Bead Homogenizers

NEW! Refrigerated Centrifuge Homogenizer

- **Powerful homogenization** of samples for isolation of DNA, RNA & proteins
- Eliminates cross contamination
- Wide variety of bead kits available
- Optional accessories for 5ml tubes (41036 and 42400 models only)

NEW! BioLink DNA Isolation Kits

See below

- Plant
- Bacteria
- Yeast



41030
3 X 2.0mL
769*



41036
6 X 2.0mL
\$1995*



42400
24 X 2.0mL
\$7495*



42500-RC
24 X 2.0mL **Refrigerated**
\$13,995*

***FREE** BioLink DNA Isolation Kit (See Page 4) **AND** LinkFuge™ Mini Centrifuge with Purchase



BioLink™ Bead Lyse Kits

- Available in silica, zirconium or stainless-steel
- High density, for fast and efficient homogenization
- Compatible with LinkLyse and all major brands of bead homogenizers



Item:	Description	Price	Item:	Description	Price
41031-01	Ø: 0.5mm silica	\$99	41032-15	Ø: 1.5mm zirc.	\$149
41031-05	Ø: 0.5mm silica	\$99	41032-30	Ø: 3.0mm zirc.	\$149
41032-10	Ø: 1.0mm zirc.	\$149	41033-30	Ø: 3.0mm SS.	\$149

(all kits prefilled in 2.0ml tubes, pk/50)



CLEARYield™ DNA Isolation Kits

RAPID Purification of DNA!
No hazardous phenol (or chloroform)



- Unique contaminant binding matrix yields CLEAR supernatant
- Includes **50 prefilled bead-beating tubes** for fast lysis (even with difficult samples)
- Provides DNA ready for qPCR/PCR, NextGen sequencing & other downstream applications

- **Plant Kit:**
Item: 9K-1001P \$198
- **Bacteria Kit:**
Item: 9K-1001B \$198
- **Yeast kit:**
Item: 9K-1001Y \$198

Includes:

- 50 Lysis tubes with **proprietary grinding matrix**
- 50 Silica spin columns
- Lysis, wash and elution buffers
- RNASE A

SPECIAL OFFER!

LinkFuge Mini Centrifuge



FREE*
Value: \$199

Includes microtube and PCR rotors

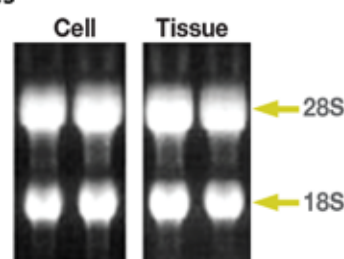
*Free with purchase of any ClearYield Kit

BLUEzol™ RNA Extraction Reagent (100mL)

NEW!



- High purity total RNA from a variety of samples
- **Unique blue color**, distinguish between aqueous and phenol phase
- Optimized for cDNA Synthesis, RT-PCR, Northern Blot, Dot Blot, etc.



16-3000
~~\$199~~
\$129



Cell Culture

Myco-X™

PCR Detection

NEW!



Prevent - Detect - Eliminate
Protect your cells from the dangers of mycoplasma!

Convenient, ready to use

Premixed, aliquoted and lyophilized, just add template DNA or samples (completion in just 2-3 hours)

Ultra-Sensitive and reliable

Detects the existence of Mycoplasma in sample with 10 CFU/ml sensitivity

Broad detection range

Detects a wide range of Mycoplasma species

Extremely stable

Vacuum packaging and 8-MOP system prevents contamination

Why Test for Mycoplasma?

Mycoplasma is a common contaminant of cell cultures and biopharmaceutical production. Research shows that approximately 30 to 85% of cell cultures are infected with Mycoplasma. Mycoplasma contamination is likely to negatively impact cell growth, synthesis of nucleic acids and protein expression.

Simple Protocol using Myco-X™ Mycoplasma PCR Detection Kit



Symptoms of Mycoplasma contamination

- Change in cell morphology
- Change in growth pattern
- Decrease in cell activity
- Poor transfection
- Observation of black particles in culture media
- Observation of black holes at cell surface

Item:	Description	Price
13-1100	Myco-X PCR detection kit, 48 reactions	\$349
Contents:	PCR MasterMix: 48x20µl lyophilized rxns in 8-strip tubes	

Specifications:

Target Size:	Approx. 260bp	Internal Control:	Yes, approx. 160bp
Species Detected:	70	Contamination Control:	8-MOP
Detection Limit:	10 CFU/mL	Protocol Time:	Less than 3 hours
Detection Method:	Agarose Electrophoresis	Storage:	-20°C

Myco-X™

Prevention Spray

- Eliminate Mycoplasma BEFORE cell entry
- Non-corrosive, non-carcinogenic
- 200mL, convenient spray bottle

Item: 13-1105 ~~\$79.99~~
\$64



BioLink™ PEAK FBS, 500mL

- USDA Origin
- Triple 0.1µm sterile filtered
- Mycoplasma tested, virus screened
- Heat inactivation, gamma irradiation

Item:	Description	Price
6BS-1002	USDA Approved Fetal Bovin Serum, 500mL	\$450

Contact us for bulk pricing!

AccuFill™ Pipette Controller

- With retractable stand
- Variable Speed Control
- 8 hours of continuous operation
- Cordless and rechargeable
- For pipettes, 1mL to 100mL

Item:	Description	Price
16-6080	AccuFill Pipette Controller	\$289



Electrophoresis

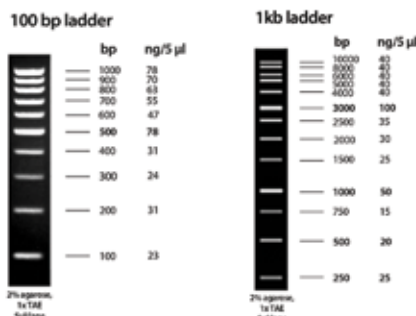
BioLink™ DNA Markers

Ship at Room Temperature!

- Ready to use formulation, includes loading dye and tracking buffer
- 500µl, suitable for 100 lanes (5µl per lane)
- High intensity reference bands

Item:	Desc.	Price
54005	50bp	\$59
54010	100bp	\$59
51100	1kb	\$59

2 for \$59



FREE Buy One get One **FREE**

SafeGLO™ DNA Stain

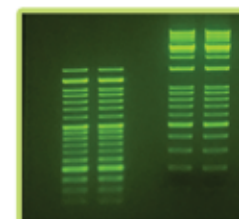
- Replaces hazardous EtBr
- Excitation by UV or Blue light
- Non-mutagenic, environmentally safe
- Available as:
PS - Pre-stain
LD - Loading dye

For nucleic acid gels

Item:	Desc.	Price
54500-PS	SmartStain PreStain, 20,000x	\$129
54500-LD	SmartStain Loading Dye, 6x	\$129

Buy One get One FREE

2 for \$129



BioLink™ DNA Gel Boxes

- RapidCast trays for quick, tape-free casting
- Includes UV transparent gel tray & combs
- Wide range of sizes, for gels up to 15x25cm

Item:	Description	Price
50708	Mini Gel System, 7 x 8cm gel tray	\$399
50911	Mini Gel System, 9 x 11cm gel tray	\$449
51214	Gel System, 12 x 14cm gel tray	\$499
51515	Gel System, 15 x 15cm gel tray	\$599
51525	Gel System, 15 x 25cm gel tray	\$649

BioLink™ Agarose LE

Buy 1 get 1 FREE

FREE

Item: 1-1705 \$389

2 for \$389

- Multi-purpose, high purity
- Enhanced resolution & clarity
- RNase, DNase, Protease Free

Accuris™ Power Supplies

- Touchscreen control
- Control voltage, amperage and run time
- Intuitive programming
- Ideal for basic electrophoresis and compatible with standard electrophoresis gel tanks

Specifications

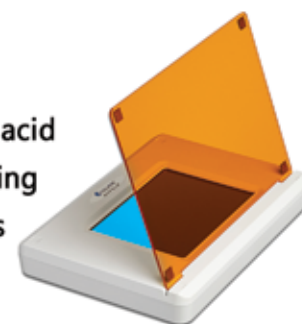
Voltage Output:	10-300V
Current Output:	4-400mA
Max Wattage:	100W
Output Terminals:	4

Item:	Description	Price
52301	myVolt Touch Power Supply, 1 to 300V	\$525

Accuris™ Smart Blue

- Safe Blue light does not damage nucleic acid
- Uniform illumination provides even lighting
- 465nm wavelength, ideal for green stains
- Two position, removable amber cover

Item:	Description	Price
54001	SmartBlue, Blue Light Transilluminator	\$575
55001-SD	SmartDoc Imaging Enclosure w/ orange photo filter	\$415
54001-VG1	Orange viewing glasses for use with blue light	\$48



54001-VG1

QuickSilver™ Powdered Buffer Packs

- Just empty pouch into water & stir, no diluting stock solutions
- Premeasured pouches, makes 1 liter of 1X buffer solution
- Long shelf life

NEW

Item:	Description (Buffer Powder)	Price
5B1000	TAE, 100 pouches	\$169
5B1001	TBE, 50 pouches	\$149
5B1002	Fast Running, 100 pouches	\$169
5B1100	Tris-Glycine-SDS, 50 pouches	\$135
5B1101	Tris-MES-SDS, 50 pouches	\$269
5B1102	Tris-MOPS-SDS, 50 pouches	\$269
5B1200	PBS, 100 pouches	\$99
5B1201	PBS-T, 100 pouches	\$99
5B1202	TBS, 100 pouches	\$149
5B1203	TBS-T, 100 pouches	\$157

Ask for a **FREE** Sample Pack!

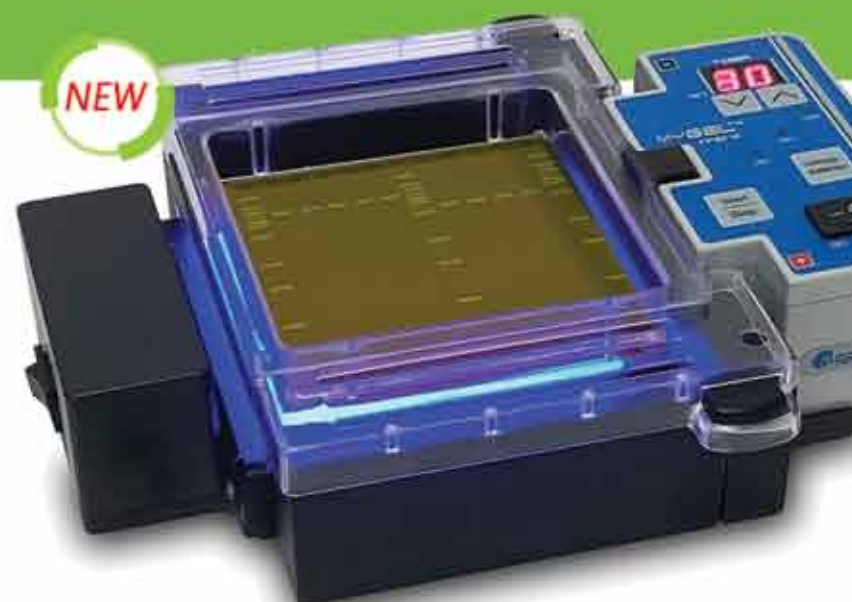
Accuris™ InstaView The COMPLETE Electrophoresis System



- View DNA migration and separation as it happens
- Blue light illumination, won't damage DNA
- Capture high resolution images without removing the gel from the tank

Item	Description	Price
51201	myGel InstaView Complete System w/ power supply	\$850
51200	myGel InstaView gel tank (connect your own power supply)	\$650
51200-CS1	Extra casting set, for 10.5x10cm gels, casting stand, tray & combs	\$40
51101-COMB1	Extra double sided combs, 22/12 teeth, pk 2	\$10

Specifications	
Output Voltage:	35V, 50V or 100V
Timer:	0-99 minute or continuous
Safety:	Magnetic switch
Max. Buffer Volume:	250mL
Gel Capacity:	One 10.5x10cm or 10.5x6cm (0.5mm thick)
Excitation Wavelength:	Blue LED (465nm)
Dimensions with Enclosure:	10 x 8.25 x 5.5in. / 25.5 x 21 x 14cm
Weight:	2.3 lbs. (1.04kg)



51200

BioLink™ Western Blot Boxes



- A box for every blot, for halves, wholes, strips or minis
- Hinged lid minimizes evaporation
- Reduce antibody usage

Item	Description	pk/	Price
21200-3	Micro-strip, 2 ⁷ / ₈ x 1 ³ / ₁₆ x 3 ³ / ₄ in.	5	\$16.00
21200-5	Mini-rectangle, 2 ⁷ / ₈ x 2 x 1 ¹ / ₄ in.	5	\$21.00
21200-7	Rectangle, 3 ¹ / ₂ x 2 ⁹ / ₁₆ x 1 in.	5	\$28.00
21200-7BK	Rectangle, 3 ¹ / ₂ x 2 ⁹ / ₁₆ x 1 in., Opaque Black	5	\$30.00
21200-9	Long strip, 4 ³ / ₄ x 3 ³ / ₁₆ x 5 ⁵ / ₈ in.	5	\$21.00
21200-11	Medium strip, 4 ³ / ₈ x 2 ¹ / ₁₆ x 1 ⁷ / ₈ in.	5	\$34.00
21200-13	Large, 4 ⁵ / ₈ x 3 ¹ / ₂ x 1 ¹ / ₈ in.	5	\$37.00
21200-13BK	Large, 4 ⁵ / ₈ x 3 ¹ / ₂ x 1 ¹ / ₈ in., Opaque Black	5	\$38.00
21200-15	Square, 4 ⁹ / ₁₆ x 4 ⁹ / ₁₆ x 1 ¹ / ₄ in.	5	\$47.00
21200-15BK	Square, 4 ⁹ / ₁₆ x 4 ⁹ / ₁₆ x 1 ¹ / ₄ in., Opaque Black	5	\$50.00
21200-17	Extra Large, 6 x 4 x 1 ¹ / ₄ in.	5	\$47.00
21200-19	XXL, 6 x 4 x 2 in.	5	\$48.00
21206	MultiBox 6, 4 ¹ / ₄ x 8 ¹ / ₄ x 1 ³ / ₈ in. 6 Compartments	4	\$55.00
21300-8BK	MiniGel Box 3 ³ / ₈ x 3 ³ / ₈ x 1 ¹ / ₈ in., Opaque Black for novex mini gel, separate lid is not hinged	10	\$69.00
21203	MultiBox™, 4 compartments, 85 x 85 x 30mm each (1 ¹ / ₄ x 2 ⁵ / ₁₆ x 1 ¹ / ₈ in.), for various gels	6	\$34.00
21212	MultiBox™, 2 compartments, (3 ¹¹ / ₃₂ x 3 ¹¹ / ₃₂ x 1 ¹³ / ₁₆ in.) for Novex Mini (8x8cm), Bio-Rad Mini (7x8cm), etc.	6	\$37.50

LinkBlot™ Western Blotting Film

- For Chemiluminescence
- Light blue base
- High contrast
- Reduced background
- Publication quality
- Suitable for:
¹⁴C ³²P ³³P ¹²⁵I ³⁵S



Item	Description	Price
18813	Western Blotting Film, 5 x 7 in.	\$79
18815	Western Blotting Film, 8 x 10 in.	\$105

BioLink™ UV Transilluminator



FREE* SmartDoc Imaging Hood

- 302nm midrange UV wavelength
- Optimal for the excitation of EtBr
- Dual intensity, 50% or 100%
- Hinged UV Safety cover

*Free with purchase of 53000 UV Transilluminator



Item	Description	Price
53000	UV Transilluminator	\$1025

General Lab Supplies

SureStrain™ Cell Strainers



- Advanced design with FAST flow through
- Superior ventilation, prevents clogging
- Interlocking and stackable
- Includes reducing adapter for 15ml tubes

Item:	Description	Price
34040	40µm sterile, indiv. wrapped, pk/50	\$105
34070	70µm sterile, indiv. wrapped, pk/50	\$105
34100	100µm sterile, indiv. wrapped, pk/50	\$105
34015	Reducing adapter, sterile, pk/25	\$39
34010	PolyPestle, 2-sided, sterile, pk/50	\$42

BioLink™ FlowTubes™



- Virgin Polystyrene
- Sterilized (gamma irradiation)
- For FACS instruments
- Free of RNase, DNase, pyrogen and cytotoxin

Item:	Description	Price
19-9005	Tube w/ 35µm strainer cap, sterile, 25/bag, 500/cs	\$449
19-9010	Tube w/ standard cap, sterile, 25/bag, 500/cs	\$129
19-9014	Dispenser box w/out cap, sterile, 250/box, 1000/cs	\$129
19-9020	Bulk w/out cap, non-sterile, 1000/bag, 4000/cs	\$259

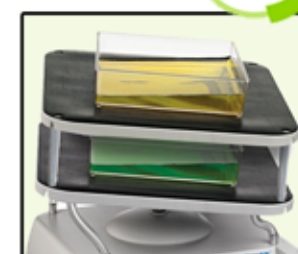
LinkRocker™ 3D Nutating (Waving) Shaker



- 3D motion for superior mixing
- Adjustable speed and tilt
- Ideal for staining and general mixing

Speed: 5-105rpm
Platform: 12.5 x 13 in.
Tilt Angle: 0 to ±10°

Item:	Description	Price
23D-5000	BioLink 3D™ Shaker	\$1199
23D-5000-S	Optional stacking platform	\$119



FREE Stacking Platform*

LinkMixer™ Vortex Mixer

- Powerful vortexing action (3,000rpm)
- Adjustable speed with touch function
- Includes cupped AND dimpled heads

Item:	Description	Price
2V-1001	LinkMixer™ Vortex Mixer Incl. both cupped & dimpled heads	\$229

\$169



RotoTherm™ Incubated Tube Rotator

NEW!

- Temperature control up to 60°C
- Includes tube holders for 0.5 to 50ml
- Easy, in-lab temperature calibration
- Available with variable speed & mixing modes

Oscillating • Pausing • Rocking

Included Holders

- 11 x 1.5-2ml (2/pk.)
- 5 x 5-7ml (2/pk.)
- 4 x 10-15ml (2/pk.)
- 6 x 50ml* (1ea.)

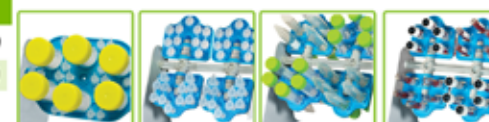
*Also accepts 24 x 0.5ml

Temp Range: Ambient +5° to 60°C
Speed Range: Fixed 24rpm / 5 to 70rpm (Plus model)
Max. Capacity: 6 x 50ml, 16 x 15ml, 24 x 0.5ml, 44 x 1.5/2.0ml, 96 x 0.2ml



Item:	Description	Price
82020	RotoTherm Tube included tube holders	\$499
82024	RotoTherm Plus w/included tube holders (variable speed)	\$689
82024-PCR	Optional tube holder for 96 x 0.2 (8 x PCR strips)	\$39

Additional tube holders available, please visit our website for a complete listing



BioLink™ Refrigerated Microcentrifuge, Hermle Z216-MK

- Available with NEW COMBI-Rotor for tubes and strips
- Compact, only 11 inches wide
- High speed up 21,632 xg
- Versatile, 10 optional rotors

Max. Speed: 15,000 rpm Max. g-Force: 21,631xg
Dimensions: 11 x 21 x 11" Temp. Range: -20 to 40°C

NEW Hermle COMBI-rotor™ with Quick-Seal lid
Holds 24 x 1.5/2.0ml and 4-PCR strips



Quick-Seal™ lid
Lid opens and locks with only a quarter turn

HERMLE
Benchmark

Item:	Description	Price
Z216-MK-BND24	Z216-MK Refrigerated Microcentrifuge w/ 24 place rotor	\$6324 \$4895
Z216-MK-BND44	Z216-MK Refrigerated Microcentrifuge w/ 44 place rotor	\$6409 \$5195
Z216-MK-CMB	Z216-MK Refrigerated Microcentrifuge w/ COMBI-Rotor™	\$6947 \$5395

SAVE

REFRIGERATED





BioLink™ Cardboard Freezer Boxes w/ hinged lid

- Attached hinged lids
- Available in six colors or assorted
- 9 x 9 (81 tube) or 10 x 10 (100 tube) format
- Alpha-numeric coding (top, sides and bottom)

Item:	Description (500 each, STERILE)	Price
18-781	81 place box with hinged lid, white (2 x 5.25 x 5.25 in.) Add (-B) blue, (-G) green, (-O) orange, (-P) purple, (-R) red, (-A) assorted	\$14
18-700	100 place box with hinged lid, white (2 x 5.25 x 5.25 in.) Add (-B) blue, (-G) green, (-O) orange, (-P) purple, (-R) red, (-A) assorted	\$14



myBlock™ Digital DryBaths

- Digital temperature control up to 105°C
- Hinged lid, improves uniformity and conserves energy
- Available with Quik-Flip™ Blocks for 0.2mL to 2.0 mL tubes



Additional blocks available, visit www.biolinklab.com.

Item:	Description	Price
2SH-5001	myBlock Single DryBath	\$419
2SH-5002	myBlock Dual DryBath	\$524
2SW-02	Block, 48 x 0.2mL	\$109
2SW-1520	Block, 24 x 12.5/2.0ml	\$109
2SW-50	Block, 5 x 50mL conical	\$119

BioLink™ Microplate Reader

Ready to use out of the box, no PC required



- Intuitive, 7 inch color touch screen control panel
- Filter based, wavelength range from 340-750nm (405, 450, 492 and 630nm included)
- Operates as stand alone system with USB flash drive for data transfer
- Integrated, multi-speed plate shaker

Item:	Description	Price
13R-9600	Microplate Absorbance Reader	\$5295
13R-9600-TP	Optional printer	\$307

SMARTREADER™ 96



LinkFuge™



- Includes microtube and PCR rotors
- Starts/stops with closing/opening lid
- Reliable design, no fragile lid tab

Special Offer

Item: 31006 \$199 **\$169**

BioLink™ Microtubes

- High performance resin, Max: 26,000xg
- Convenient self standing bag
- All supplied as STERILE
- Unique assorted color pack, sterile



Item:	Description (500/bag)	Price
32001	1.5ml, clear in self-standing bags	\$13
32000-50	As above 10 individual bags of 50	\$16
32001-AST	1.5ml, assorted in self-standing bags	\$14
32000-50AST	As above 50 of each color per bag	\$17
32001-B	1.5ml, blue in self-standing bags	\$13
32001-R	1.5ml, red in self-standing bags	\$13
32001-G	1.5ml, green in self-standing bags	\$13
32001-O	1.5ml, orange in self-standing bags	\$13
32001-P	1.5ml, purple in self-standing bags	\$13
32001-Y	1.5ml, yellow in self-standing bags	\$13
32001-OB	1.5ml, opaque in self-standing bags	\$13
32002	2.0ml, clear in self-standing bags	\$14
32007	0.5ml, assorted in self-standing bags	\$14



General Lab Supplies



BioLink™ Analytical Balances

- Upgraded weighing performance with internal calibration
- Choose from graphical display or NEW touch screen interface
- Available with readability down to 0.00001g

Item:	Description	Price
23-3101A-120	Graphical display, 120g x 0.0001g	\$1795
23-3101A-220	Graphical display, 220g x 0.0001g	\$2059
23-3102A-120	Touch display, 62 x 0.00001g / 120g x 0.0001g	\$3129
23-3102A-220	Touch display, 220g x 0.0001g	\$2399



BioLink™ Compact Balances

Item:	Description	Price
23-3300-120	120g x 0.01g	\$259
23-3300-500	500g x 0.01g	\$289
23-3300-5K	5000g x 0.1g	\$329



BioLink™ Weigh Boats

- Antistatic and biologically inert
- Recessed corners for precise pouring

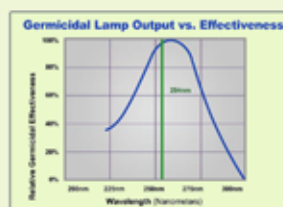
Item:	Description (Pack of 500)	Price
26001*	Square, 20ml, 45 x 45mm	\$35
26002*	Square, 100ml, 80 x 80mm	\$53
26003*	Square, 250ml, 140 x 140mm	\$98
26501*	Diamond, 5ml, 35 x 55mm	\$35
26502*	Diamond, 30ml, 65 x 85mm	\$50
26503*	Diamond, 100ml, 100 x 125mm (250/pk)	\$46
26602W	Round weigh bucket for liquids, 40ml	\$49

*Add "W" for white or "B" for black



NuvaClean™ UV Pipette Carousel

- UV illumination (254nm) reduces DNA & biological contaminants by 99%
- Universal, accepts all popular pipettes
- Preset, 28 min. timer



Item:	Description	Price
16-5590	NuvaClean UV Carousel, 6 position	\$369



BioLink™ Solution Reservoirs



75mm (ID), for 8-channel pipettes

- Rigid polystyrene with molded graduations
- No-stick stacking design

Item:	Description	Packaging	Price
16-8010	10mL, 8-channel	Bulk, 300	\$99
16-7025	25mL, 8-channel	Bulk, 100	\$49
16-8025	25mL, 8-channel	Bulk, 100	\$49
16-8050	50mL, 8/12-channel	Bulk, 100	\$49
16-8051	50mL Divided	Bulk, 100	\$49
16-8100	100mL, 8/12-channel	Bulk, 100	\$49

*Supplied as non-sterile. For sterile, please add:
 (-1S) for sterile individually wrapped, 100 each \$99
 (-5S) for sterile 5 per bag, 200 each \$99

BioLink™ Pipettes

- Lightweight, reduced pipetting force
- Superior accuracy and precision
- Smooth, low force volume adjustment with lock

Item:	Description	Price
16-5200-2	0.2 to 2µl	\$199
16-5200-10	0.5 to 10µl	\$199
16-5200-20	2 to 20µl	\$199
16-5200-50	5 to 50µl	\$199
16-5200-100	10 to 100µl	\$199
16-5200-200	20 to 200µl	\$199
16-5200-1M	100 to 1000µl	\$199
16-5200-5M	1ml to 5mL	\$229
16-5200-10M	1ml to 10mL	\$229
16-5208-10	8-channel 1-10µl	\$399
16-5208-200	8-channel 20-200µl	\$399
16-5208-300	8-channel 30-300µl	\$399
16-5212-10	12-channel 1-10µl	\$499
16-5212-200	12-channel 20-200µl	\$499
16-5212-300	12-channel 30-300µl	\$499

Purchase any multichannel pipette and get a **FREE** Single Channel



MC-24™ Touch High Speed Microcentrifuge

- Full color touch screen
- mySpin™ 1 button program recall
- Combi-rotor, accepts tubes and strips

Item: 32417

MC-24 Touch Centrifuge with rotor (24x2.0mL & 2 x PCR Strips)

~~\$2115~~ **\$1965**

13,500rpm/16,800xg



FREE CoolCaddy™ PCR Workstation



Maintains 2 to 4°C for up to 6 hours

Capacity:	
1.5/2.0mL Microtubes:	9 Tubes
2.0mL Cryotubes:	8 Tubes
0.5mL Microtubes:	5 Tubes
PCR Plates:	1 Plate
PCR Tubes:	96 Tubes or 12 Strips
Reservoirs:	1 x 50mL Reservoir

Item: 18-4015
CoolCaddy PCR Workstation **\$149**

FREE CoolCaddy™ 5 Hour PCR Workstation
 Just purchase any 3 packs of reservoirs and receive a CoolCaddy™ free of charge.

SAVE

MultiTherm™ Thermal Shaker



- Temperature control from 0° to 100°C
- Exchangeable blocks, for tube sizes 0.2ml to 50ml
- Precision contoured wells for uniform heat transfer
- Sequence link function for linking or repeating programs (HC model only)

Item:	Description	Price
85000-H	MultiTherm, heat only	\$1999
85000-HC	MultiTherm, heat and cool	\$2629
85000-02	Block, 96 x 0.2ml or PCR plate	\$269
85000-15	Block, 35 x 1.5ml tubes	\$269
85000-150	Block 12 x 15ml conical tubes	\$385
85000-500	Block 6 x 50ml conical tubes	\$385



Digital Hotplate Stirrers

- Large, ceramic work surface, 7 x 7 in
- Safety LED indicates hot surface
- 5 L stir capacity
- Control actual sample temperature (with optional probe)

Item: 83770-HS Digital Hotplate & Stirrer **\$374**

MyBlock™ Mini Dry Baths



- Compact, fits in your hand
- Heating and Cooling available
- Exchangeable blocks, 0.2-50mL

Item:	Description	Price
8SH200	MyBlock, Heat Only (Up to 100°C)	\$239
8SH300	MyBlock Heat and Cool (0° to 100°C)	\$629
8SH100-02	Block, 40 x 0.2 ml (or 5xPCR strips)	\$45
8SH100-05	Block, 24 x 0.5 ml	\$83
8SH100-15	Block, 15 x 1.5 ml	\$83
8SH100-500	Block, 2 x 50 ml	\$105
8SH100-1520	Block, 15 x 1.5 ml/2.0 ml	\$83
8SH100-1232	Block, 15 x 2 ml autosampler vials	\$83
8SH100-CV	Block, 8 curvettes	\$83

BioLink™ Conical Tubes, 15 & 50mL



- Color coded for easy sample identification
- Sterile, RNase, DNase, pyrogen and cytotoxin free
- Available racked or bagged
- Frosted marking surface

Available in foam racks with assorted colors

Item:	Description (500 each, STERILE)	Price
32715	15mL in foam racks (50/rk), 10 racks (500 ea.)	\$139
32716	15mL bulk bags, 25 of each color/bag, 4 bags (500 ea.)	\$129
32750	50mL in foam racks (25/rk), 20 racks (500 ea.)	\$159
32751	50mL bulk bags, 25 of each color/bag, 4 bags (500 ea.)	\$149

Incu-Shaker™ Shaking Incubators

- Large flask capacity
- MAGic Clamp accessories for instant-magnetic clamp exchange
- Available with CO₂ control or cooling

Incu-Shaker™ Mini

Speed Range: **30 to 300 rpm**
 Temp Range: **Amb. +5°C to 70°C**
 Platform Dims: **9.5 x 11.5 in.**
 Universal Platform: **81000-MR**
 Flask Capacity: **2 x 1 L (81000-MR-1000)**
5 x 500 ml (81000-MR-500)
8 x 250 ml (81000-MR-250)
12 x 125 ml (81000-MR-125)

\$2895



Item: 81001-M
Incu-Shaker Mini

Incu-Shaker™ 10L & 10LR

Speed Range: **30 to 300 rpm**
 Temp Range: **Amb. +5°C to 60°C**
 (H2012, Cooling Model) **Amb. -15°C to 60°C**
 Platform Dims: **17.8 x 17.8 in.**
 Universal Platform: **81010-MR**
 Flask Capacity: **5 x 2 L (81000-MR-2000)**
9 x 1 L (81000-MR-1000)
16 x 500 ml (81000-MR-500)
25 x 250 ml (81000-MR-250)
36 x 125 ml (81000-MR-125)

**\$5937/
\$8295**



Item: 82010-M & 82012
Incu-Shaker 10 & 10LR

Incu-Shaker™ Mini CO₂

Speed Range: **30 to 300 rpm**
 Temp Range: **Amb. +5°C to 60°C**
 CO₂ Range: **0 to 20%**
 Platform Dims: **9.5 x 11.5 in.**
 Universal Platform: **81000-MR**
 Flask Capacity: **5 x 500 ml (81000-MR-500)**
8 x 250 ml (81000-MR-250)
12 x 125 ml (81000-MR-125)

\$8665



Item: 83501
Incu-Shaker Mini CO₂



BioLink™ 5mL Centrifuge Tubes

- Same diameter as 15ml tubes, compatible with standard equipment
- Centrifuge at up to 25,000xg
- Unsurpassed clarity
- Dual graduations (every 0.2mL and 0.5mL)

Item:	Description	Price
32530	Bulk, Non-Sterile, screw caps packed separately, 500 ea.	
32540	Sterile, attached screw caps in foam racks of 50, 500 ea.	
32540-OB	Sterile, packed as above in opaque black	
32581	Freezer box, polycarbonate 5 x 5 (25), pack of 5	
32500*	Snap-cap, 4 bags of 50 tubes, non sterile (200 ea.)	
32520	Snap-Cap, 10 bags of 20 tubes, sterile (200 ea.)	

*Please add (-B) for blue, (-G) for green, (-R) for red, (-Y) for yellow or (-OB for opaque black)

31005
\$438

Mini-Centrifuge, 4x5mL

32590
\$39

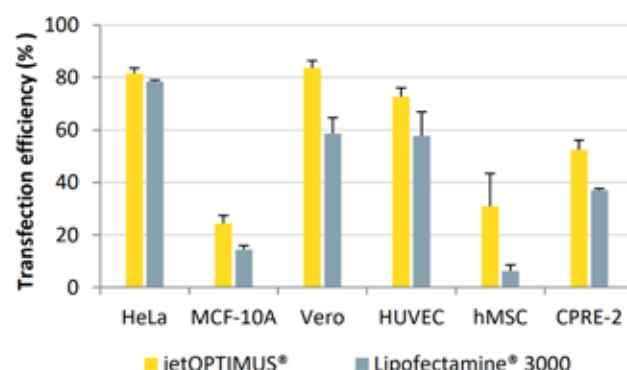
Two Tiered Rack
16 x 5mL

Also Available
in Snap-Cap



Also Available from BioLink... **Polyplus⁺ transfection** jetOptimus® Best in class DNA Transfection Reagent

Highly efficient: jetOPTIMUS® outperforms its main competitor.



Transfections were performed on several cell lines following standard protocol.

- Highly efficient: Reach maximal gene expression in hard-to-transfect cells
- Cost effective: Use minimum reagent volume and DNA quantity
- Biologically relevant: Keep an excellent cell viability and morphology
- Time saving: Transfect with an optimized ready-to-use protocol

Item:	Description	Price
20-117-01	jetOPTIMUS Transfection Reagent, 0.1mL (Buffer: 10mL)	\$65
20-117-07	jetOPTIMUS Transfection Reagent, 0.75mL (Buffer: 2 x 60mL)	\$322
20-117-15	jetOPTIMUS Transfection Reagent, 1.5mL (Buffer: 4 x 60mL)	\$547

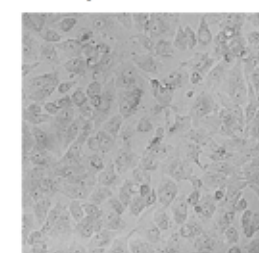
Cost-effective: Do more with less!

DNA transfection (standard protocol) in 24-well plate		
Reagent	Volume of Reagent per well (μL)	Number of transfections per 1.5 mL vial
jetOPTIMUS*	0.5	3 000
Lipofectamine* 3000	0.75 – 1.5	2 000 – 1 000

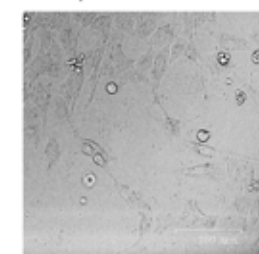
Double your number of transfections with jetOPTIMUS*.

Biologically relevant:
No sign of cell toxicity after transfection

jetOPTIMUS*



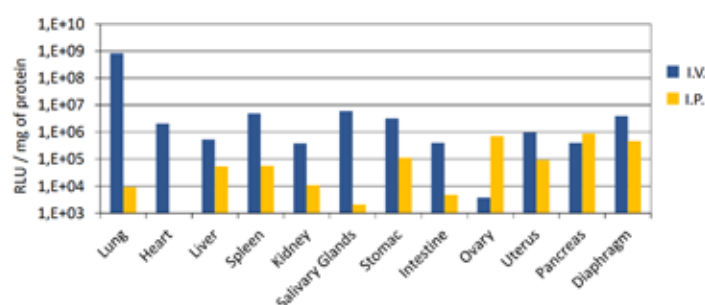
Lipofectamine® 3000



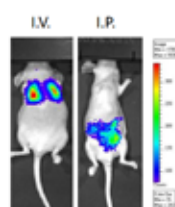
Transfections were performed on Vero cells following standard protocol

Polyplus⁺ transfection jetPEI® in-vivo DNA si mRNA Transfection Reagent

A wide variety of targeted organs depending on the administration route



Complexes were formed using 40 μg or 100 μg of luciferase expressing plasmid and in vivo-jetPEI® at an N/P ratio of 8, in 200 μl or 1 ml of 5% glucose and injected either through retro-orbital sinus (IV) or intraperitoneally (IP), respectively. 24 hours after injection, different organs were extracted and luciferase expression was measured or live imaging was performed using IVIS system (Perkin Elmer).



Item:	Description	Price
20-201-01	in-vivo jetPEI, 0.1mL (10mL 10% glucose solution)	\$496
20-201-05	in-vivo jetPEI, 0.5mL (2 x 10mL 10% glucose solution)	\$1748

- Easy, two step protocol
- Polyvalent: in vivo delivery of DNA, si/sh/miRNA in any animal model
- Renowned: Most advanced in vivo delivery technology with over 700 peer-reviewed publications
- Successful: Used from fundamental research to Human clinical trials

